



Stainless Steel Hose

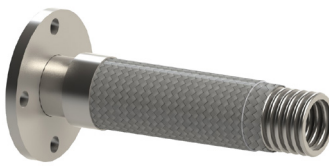
VITALFLEX® - Annular



Construction: Annular / Close Pitch
Tube Available: 304 / 316 Stainless Steel
Braid Available: 304 / 316 Stainless Steel
Size Available: 1/4" - 14"
Max Temp: -276°C to 700°C

| | | | |
|---------------------|-----|-----|------|
| | Low | Med | High |
| Flexibility | | | |
| Cycle Life | | | |
| Pressure Rating | | | |
| Chemical Resistance | | | |
| Wall Thickness | | | |

Construction



Applicable Standards:
 Corrugated Metal Hoses: ISO 10380
 AGA Approved: AS 4631 (upon request)
 Watermark Approved: WMTS 520 (upon request)

Welding Compliant: AS 4041- Class 1 (upon request)
 Seismic Rated: AS 1170 (upon request)
 Fire Protection Systems (upon request)

Temperature Correction Factor ISO 10380 (316L)

| | | | | | | | | | | | | | | | | | | | |
|------|------|------|-----|-----|-----|------|------|------|------|------|------|------|------|------|------|------|------|------|-----|
| -200 | -150 | -100 | -50 | 0 | 20 | 50 | 100 | 150 | 200 | 250 | 300 | 350 | 400 | 450 | 500 | 550 | 600 | 650 | 700 |
| 1.0 | 1.0 | 1.0 | 1.0 | 1.0 | 1.0 | 0.93 | 0.83 | 0.72 | 0.66 | 0.62 | 0.59 | 0.56 | 0.55 | 0.53 | 0.51 | 0.50 | 0.50 | 0.19 | 0.1 |

| Nominal Dia. | | Weight (Kg/m) | | | Min. Bend Radius(mm) | | Working Pressure (kPa) | | | Burst Pressure (kPa) | | |
|--------------|--------|---------------|-------|-------|----------------------|---------|------------------------|-------|-------|----------------------|-------|-------|
| mm | inch | SS0 | SS1 | SS2 | Static | Dynamic | SS0 | SS1 | SS2 | SS0 | SS1 | SS2 |
| 6 | 1/4" | 0.13 | 0.25 | 0.39 | 28 | 80 | 496 | 16270 | 19523 | 1985 | 65079 | 78095 |
| 10 | 3/8" | 0.19 | 0.37 | 0.53 | 38 | 129 | 496 | 11299 | 13560 | 1985 | 45197 | 54242 |
| 12 | 1/2" | 0.34 | 0.50 | 0.68 | 45 | 139 | 496 | 8445 | 10134 | 1985 | 33780 | 40536 |
| 20 | 3/4" | 0.58 | 0.88 | 1.18 | 67 | 167 | 296 | 7128 | 8555 | 1186 | 28513 | 34221 |
| 25 | 1" | 0.79 | 1.12 | 1.46 | 84 | 190 | 296 | 5487 | 6583 | 1186 | 21950 | 26335 |
| 32 | 1 1/4" | 1.13 | 1.60 | 2.05 | 105 | 260 | 296 | 4136 | 4963 | 1186 | 16545 | 19854 |
| 40 | 1 1/2" | 1.25 | 1.84 | 2.43 | 130 | 298 | 193 | 3840 | 4605 | 772 | 15359 | 18420 |
| 50 | 2" | 1.34 | 2.27 | 3.20 | 160 | 318 | 193 | 3930 | 4715 | 772 | 15718 | 18862 |
| 65 | 2 1/2" | 1.76 | 2.78 | 3.83 | 203 | 500 | 100 | 2826 | 4521 | 400 | 11307 | 18084 |
| 80 | 3" | 1.81 | 2.99 | 4.19 | 229 | 558 | 90 | 2310 | 3696 | 400 | 9240 | 14784 |
| 100 | 4" | 2.52 | 4.01 | 5.50 | 330 | 685 | 80 | 1654 | 2646 | 320 | 6618 | 10584 |
| 125 | 5" | 3.74 | 5.61 | 7.03 | 457 | 787 | 41 | 1316 | 2110 | 164 | 5264 | 8440 |
| 150 | 6" | 5.19 | 7.11 | 9.04 | 482 | 914 | 34 | 1137 | 1820 | 136 | 4550 | 7280 |
| 200 | 8" | 8.31 | 14.13 | 19.99 | 508 | 1016 | 41 | 1643 | 2578 | 164 | 6440 | 10307 |
| 250 | 10" | 10.17 | 19.30 | 28.44 | 635 | 1270 | 35 | 1585 | 2530 | 140 | 6329 | 10128 |
| 300 | 12" | 13.50 | 22.19 | 30.89 | 762 | 1524 | 20 | 1110 | 1771 | 80 | 4433 | 7094 |
| 350 | 14" | 21.10 | 32.48 | 43.85 | 889 | 1778 | 20 | 820 | 1310 | 80 | 3282 | 5240 |

Part Number Key:

SSwxy-A-z-VITALFLEX

w: Braid 0 = no braid 1 = Single Braid 2 = Double Braid
x: Tube Material 6S = 316 Tube 4S = 304 Tube
y: Braid Material 6S = 316 Braid 4S = 304 Braid
z: Hose Size 40 = 1-1/2" 06 = 1/4", 10 = 3/8", 12= 1/2", 20= 3/4", 25 = 1", 32=1-1/4" and so on

Example: SS16S4S-A-40-VITALFLEX = 1-1/2" Single Braided Annular Stainless Steel Hose, 316 Tube and 304 Braid